

THIRD ANNUAL UPMC
**PAIN MANAGEMENT
SYMPOSIUM**

**November 2, 2007:
Chronic Pain and Nursing Tracks**

**November 3 & 4, 2007:
Acute Perioperative Pain Track**

*For up-to-date information and online registration,
please visit our website.*

<https://cehs.upmc.edu/reg-sessionEvent.jsp?courseNumber=1368>

THIRD ANNUAL UPMC
**PAIN MANAGEMENT
SYMPOSIUM**

**November 2, 2007
Chronic Pain and Nursing Tracks**

**November 3 & 4, 2007
Acute Perioperative Pain Track**

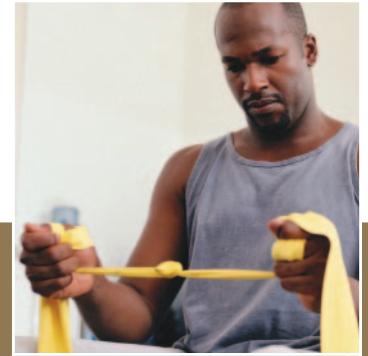
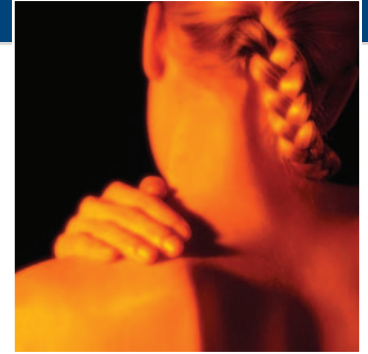
Course Directors

Jacques E. Chelly, MD, PhD, MBA
Doris K. Cope, MS, MD
Brian Cicuto, DO, PT
Colleen J. Dunwoody, MS, RN-BC
Marcia C. Homer, RN-BC
Jane B. Sarra

UPMC | University of Pittsburgh
Medical Center

Sponsored by
The University of Pittsburgh
School of Medicine
Center for Continuing Education
in the Health Sciences
UPMC Department of Anesthesiology
Division of Pain Medicine

Nemacolin Woodlands Resort ▶▶▶▶▶
Farmington, Pennsylvania



THIRD ANNUAL UPMC PAIN MANAGEMENT SYMPOSIUM

WHO SHOULD ATTEND

Chronic Pain and Nursing Tracks and Acute Perioperative Pain Track

This course is designed for pain and primary care physicians, neurologists, neurosurgeons, emergency room and rehab physicians, gastroenterologists, physiatrists, surgeons, anesthesiologists, internal medicine and family practice physicians and general practitioner, residents, fellows, pharmacists, CRNA's, CRNP's, PA-C's, nurses and anyone interested in pain management.

MEETING LOCATION

The conference will be held at the Nemacolin Woodlands Resort, located at 1001 Lafayette Drive, Farmington, PA 15437. A block of rooms has been reserved at the Nemacolin Woodlands Resort and Spa if you should require one. The group rate for the Lodge is \$159 per night plus applicable taxes. The group rate for the Chateau is \$209 per night plus applicable taxes. Please call and mention that you are attending the *UPMC Pain Management Symposium* in order to secure the reduced symposium rate available until **September 17, 2007**.

REGISTRATION INFORMATION

PRE-REGISTER – All pre-registrations are due by **October 15, 2007**. Registrations after this date cannot be guaranteed.

On-line Registration accepted until **October 30, 2007** or until capacity is met. Registering online is the quickest and easiest way to reserve your space at CCEHS conferences.

- Visit our online registration site at:
<https://ccehs.upmc.edu/regSessionEvent.jsp?courseNumber=1368>
- Scroll to the **UPMC Pain Management** section on the web page
- Click the Registration button and enter all the requested information
- After registering, an electronic confirmation will be sent to the email address you provided us when you registered.

Please note: Registration is not complete until you receive the confirmation letter / email for your pre-registration. If you do not receive this letter within 5-7 days of registration, please contact us at (412) 647-8257 or (412) 647-8232.

You must bring this confirmation with you to the conference.

Paper Registrations by Fax or Mail (see contact information below):

If you are unable to register online please contact us for a paper registration form. UPMC employees whose registration fee will be remitted via journal transfer should request the paper registration form.

Registration Cancellation: All cancellations must be in writing and sent to us via U.S. mail, e-mail or fax. Tuition for cancellations postmarked or date stamped before **October 15** will be completely refunded. After **October 15**, a \$35 administrative fee will be assessed. No refunds will be made after **October 21**.

Conference Contact for Cancellation Requests or Paper Registrations:

Dan Lewis, UPMC/CCEHS, Medical Arts Building, Suite 220
200 Lothrop Street • Pittsburgh PA 15213 • Email: CCEHS@upmc.edu
Phone: (412) 647-8257 or 412-647-8232 • Fax: (412) 647-8222

Transportation: Ground transportation is available from Pittsburgh International Airport. For information and reservations call 800-422-2736.

REGISTRATION FEES

Early Registration Rates

| | Day 1 (Friday) | Days 2 & 3 (Saturday and Sunday) | All 3 days (Friday, Saturday & Sunday) |
|------------------------|----------------|-------------------------------------|--|
| MD, DO, PhD | \$250 | \$350 | \$450 |
| CRNA | \$200 | \$250 | \$350 |
| RN, Residents & Others | \$75 | \$75 | \$125 |

Late Registration Rates (After October 15, 2007)

| | Day 1 (Friday) | Days 2 & 3 (Saturday and Sunday) | All 3 days (Friday, Saturday & Sunday) |
|------------------------|----------------|-------------------------------------|--|
| MD, DO, PhD | \$275 | \$425 | \$500 |
| CRNA | \$225 | \$300 | \$400 |
| RN, Residents & Others | \$100 | \$100 | \$175 |

Registration fee includes:

- Continuing education credit
- Registration and course materials
- Continental breakfast, refreshments and lunch

The UPMC/Center for Continuing Education in the Health Sciences reserves the right to cancel this program if sufficient registrations are not received. In the case of cancellation, the department will fully refund registration fees. However, other costs incurred by the registrant, such as airline or hotel penalties, are the responsibility of the registrant.

Scientific Committee

Jacques E. Chelly, MD, PhD, MBA

Professor of Anesthesiology and Orthopaedic Surgery
Director of the Division of Acute interventional Perioperative Pain
and Regional Anesthesia
University of Pittsburgh School of Medicine

Doris K. Cope, MS, MD

Professor and Vice Chairman
Division of Pain Management
Department of Anesthesiology
University of Pittsburgh School of Medicine

Brian Cicuto, DO, PT

Clinical Assistant Professor of Anesthesiology
Division of Pain Medicine
University of Pittsburgh School of Medicine
Medical Director
UPMC Pain Medicine at Centre Commons

Colleen J. Dunwoody, MS, RN-BC

Advanced Practice Nurse – Pain Management
UPMC Presbyterian Shadyside

Marcia C. Homer, RN-BC

Nurse Coordinator
UPMC Pain Medicine
Department of Anesthesiology
Division of Pain Medicine

Lois Pizzi, BSN, RN-BC

Inpatient Pain Coordinator
UPMC Shadyside

Mary Felix

Practice Manager
Department of Anesthesiology
Division of Pain Medicine

Poster Committee for the Chronic Pain Track

Doris K. Cope, MS, MD

Professor and Vice Chairman
Division of Pain Management
Department of Anesthesiology
University of Pittsburgh School of Medicine

Deborah Bloomberg

Academic Administrative Assistant
University of Pittsburgh Medical Center

PAIN MANAGEMENT SYMPOSIUM OVERVIEW

The Third Annual UPMC Pain Management Symposium is an academically focused meeting designed to provide health care professionals with the latest trends, techniques, therapies and interventional procedures in pain research and pain management. The expert faculty will focus on the pain patient as a whole, addressing acute as well as chronic pain. Participation in the symposium will provide the attendee a multifaceted view of managing a patient's pain throughout the adult life span including the end of life process. It will address sensitive ethical and regulatory issues, offer interactive specialty tracks, and scientific poster presentations. The symposium will also provide hands-on for the use of ultrasound for guided peripheral nerve blocks and peripheral nerve block techniques for perioperative surgical procedure.

CONTINUING EDUCATION CREDIT

The University of Pittsburgh School of Medicine is accredited by the Accreditation Council for Continuing Medical Education to provide continuing medical education for physicians.

The University of Pittsburgh School of Medicine designates this educational activity for a maximum of **19.5 AMA PRA Category 1 Credits™**. Each physician should only claim credit commensurate with the extent of their participation in the activity. Other health care professionals are awarded **1.95** continuing education units (CEU's) which are equal to **19.5** contact hours.

This continuing nursing education activity has been approved for **19.5** contact hours by the UPMC Provider Unit of the PA State Nurses Association, an accredited approver by the American Nurses Credentialing Center's Commission on Accreditation. To receive contact hours, the participant must attend the entire session and complete the evaluation form and sign-in sheets and return all information before leaving the course.

Chronic Pain and Nursing Tracks — this portion of the Symposium awards **7.25** AMA PRA Category 1 Credits.

Acute Perioperative Pain Track — this portion of the Symposium awards **12.25** AMA PRA Category 1 Credits.

Friday, November 2, 2007

OBJECTIVES

Aberrant Drug-taking Behaviors During Opioid Therapy for Chronic Pain:

What Do We Know? – *Steven D. Passik, PhD*

- Recognize and assess and interpret the 4 A's in the success or failure of an opioid trial.
- Recognize both the obvious and less obvious behaviors that may map on addiction or represent several other alternatives.
- Identify emerging research on aberrant behavior as well as new screening tools for even the highest risk patients.
- Identify risk management approaches based upon emerging data.

Psychiatric Comorbidities in Patients with Persistent Pain – *Jordan F. Karp, MD*

- Learn to identify common psychiatric syndromes that may interfere with optimal treatment outcomes.
- Understand affective pain processing in the central nervous system.
- Become familiar with effective treatment for depression, anxiety, and other psychiatric comorbidities.

Medication-Induced Xerostomia – *Bobby M. Collins, DDS, MS*

- Recognize common classes of medications that produce xerostomia.
- Be able to describe oral and dental changes associated with xerostomia.
- Be able to describe medications and patient instructions to reduce the effects of xerostomia.

Visceral Pain and Hypersensitivity – *Gerald Gebhard, PhD*

- Contrast visceral pain with pain from other tissues.
- Understand the unique anatomy of visceral innervation.
- Understand how the unique physiology of visceral innervation contributes to visceral pain and hypersensitivity.

Perioperative Management of the Opioid Tolerant Patient – *Jeffrey R. Eck, MD*

- Ability to determine who is an opioid tolerant patient
- Understand the difference between tolerance, dependence and addiction.
- Have a clearer understanding of appropriate use of long acting vs short acting opioids in a perioperative patient.

Peripheral Nerve Field Stimulation for Intractable Migraines, Headaches and Facial Pain – *Giancarlo Barolat, MD*

- Learn what painful conditions affecting the face/head might benefit from peripheral nerve field stimulation.
- Strategies for electrode placement.
- How to avoid complications.

Laboratory Testing for Opioids and Drugs of Abuse –

Matthew D. Krasowski, MD, PhD

- Understand the basic principles and clinical utility of screening tests for opioids and drugs of abuse.
- Recognize the limitations of screening tests related to cross-reactivity and sensitivity, especially in complex drug classes such as amphetamines, benzodiazepines, and opiates.
- Understand the use and clinical application of chromatography and mass spectrometry assays in providing definitive identification of opioids and drugs of abuse.

Addiction and Pain – *Antoine Douaihy, MD*

- Recognize the high prevalence of pain in patients with addiction.
- Learn how pain and addiction interact with each other.
- Gain knowledge about how to manage pain in patients with addiction.

Detoxification: How, When and Where – *Anna M. Hahn, RN*

- Identify opioid, benzodiazepine and alcohol withdrawal symptoms.
- Identify and compare levels of care available for detoxification.
- Summarize medications given for alcohol, benzodiazepine and opiate withdrawal.

Pain Assessment, Management and Fear of Substance Abuse

in Older Adults – *Barbara M. Usher, PhD, APRN-BC, BC-PCM*

- Discuss 5 adverse consequences of untreated pain in the older adult.
- Identify 4 patient barriers and 4 provider barriers that contribute to "fear of substance abuse" in pain management.
- Differentiate among common types of pain in the older adult.
- Utilize multiple techniques for assessing pain in the cognitively impaired older adult.
- Understand the pharmacological and non-pharmacological modalities that are most effective for use in treatment of acute and chronic pain in older adults.

Interstitial Cystitis – What Is It? What Can We Do About It? –

Margie L. O’Leary, MSN, RN, MSCN

- Discuss the etiology and diagnostic workup of Interstitial Cystitis.
- Describe pharmacologic and non-pharmacologic treatment regimes.
- Explain the need for interdisciplinary care in patient management.
- Discuss novel targets for future pharmacologic interventions.

What a Pain! When Inadequate Pain Assessment Can Take You to the Courtroom – Linda K. Reid-Kelly, RN, MSN, JD

- Analyze complex clinical data that preceded an adverse event.
- Synthesize clinical findings for the purpose of preventing an adverse event.
- Describe the process by which an adverse event can become a lawsuit.

Symptom Management at the End of Life – Kathleen K. Curran, CRNP

- List effective treatments for dyspnea.
- Name current strategies for the treatment of nausea and vomiting.
- Identify depression and suffering in patients with life limiting diseases.

The University of Pittsburgh, as an educational institution and as an employer, values equality of opportunity, human dignity, and racial/ethnic and cultural diversity. Accordingly, the University prohibits and will not engage in discrimination or harassment on the basis of race, color, religion, national origin, ancestry, sex, age, marital status, familial status, sexual orientation, disability, or status as a disabled veteran or a veteran of the Vietnam era. Further, the University will continue to take affirmative steps to support and advance these values consistent with the University’s mission. This policy applies to admissions, employment, access to and treatment in University programs and activities. This is a commitment made by the University and is in accordance with federal, state, and/or local laws and regulations. For information on University equal opportunity and affirmative action programs and complaint/grievance procedures, please contact: William A. Savage, Assistant to the Chancellor and Director of Affirmative Action (and Title IX and 504 Coordinator), Office of Affirmative Action, 901 William Pitt Union, University of Pittsburgh, Pittsburgh, PA 15260, (412) 648-7860.

SCHEDULE ~ CHRONIC PAIN AND NURSING TRACKS

Friday, November 2, 2007

- 7:00 am Registration, Continental Breakfast & POSTER SESSION
- 8:45 am **Welcome**
John P. Williams, MD, Doris K. Cope, MS, MD, Brian Cicuto, DO, PT
- 9:00 am **Aberrant Drug-taking Behaviors During Opioid Therapy for Chronic Pain: What Do We Know?**
Steven D. Passik, PhD

| Chronic Pain Track | | Nursing Track | |
|--------------------|---|---------------|---|
| 10:15 am | Psychiatric Comorbidities in Patients with Persistent Pain <i>Jordan F. Karp, MD</i> | 10:15 am | Detoxification: How, When, Where <i>Anna M. Hahn, RN</i> |
| 11:00 am | Medication-induced Xerostomia <i>Bobby M. Collins, DDS, MS</i> | 11:15 am | Pain Assessment, Management and Fear of Substance Abuse in the Older Adult <i>Barbara M. Usher, PhD, APRN-BC, BC-PCM</i> |
| 11:30 am | Visceral Pain and Hypersensitivity <i>Gerald F. Gebhart, PhD</i> | | |
| 12:15 pm | Lunch/Exhibits/Posters | | |
| 1:30 pm | Perioperative Pain Management of the Opioid Tolerant Patient <i>Jeffrey R. Eck, MD</i> | 1:30 pm | Interstitial Cystitis – What Is It? What Can We Do About It? <i>Margie L. O’Leary, MSN, RN, MSCN</i> |
| 2:00 pm | Peripheral Nerve Field Stimulation for Intractable Migraines, Headaches and Facial Pain <i>Giancarlo Barolat, MD</i> | 2:30 pm | What a Pain! When Inadequate Pain Assessment Can Take You to the Courtroom <i>Linda K. Reid-Kelly, RN, MSN, JD</i> |
| 3:00 pm | Laboratory Testing for Opioids and Drugs of Abuse <i>Matthew D. Krasowski, MD, PhD</i> | | |
| 3:30 pm | Break/Exhibits/Posters | | |
| 4:00 pm | Addiction and Pain <i>Antoine Douaihy, MD</i> | 4:00 pm | Symptom Management at the End of Life <i>Kathleen K. Curran, CRNP</i> |
| 5:00 pm | Fibromyalgia <i>Cheryl D. Berstein, MD</i> | | |

5:45 pm Friday Adjournment

Chronic Pain and Nursing Tracks Faculty

Cheryl D. Berstein, MD

Assistant Professor of Anesthesiology
Division of Pain Medicine

Brian Cicuto, DO, PT

Clinical Assistant Professor
of Anesthesiology
Division of Pain Medicine
Medical Director
UPMC Pain Medicine at Centre Commons

Bobby M. Collins, DDS, MS

Associate Professor
University of Pittsburgh
School of Dental Medicine
Pathology Consultant
Veterans Administration Medical Center

Doris K. Cope, MS, MD

Professor and Vice Chairman
Division of Pain Medicine
Department of Anesthesiology

Kathleen K. Curran, CRNP

Clinician for Medical Ethics and Palliative Care
UPMC Shadyside

Antoine Douaihy, MD

Assistant Professor of Psychiatry

Jeffrey R. Eck, MD

Clinical Instructor of Anesthesiology
Division of Pain Medicine

Gerald F. Gebhart, PhD

Professor of Anesthesiology
Professor of Neurobiology
Professor of Pharmacology
University of Pittsburgh Medical Center

Anna M. Hahn, RN

Coordinator, Ambulatory
Detoxification Program
Western Psychiatric Institute and
Clinic of UPMC

Marcia C. Homer, RN-BC

Nurse Coordinator
UPMC Pain Medicine
Department of Anesthesiology
Division of Pain Medicine

Jordan F. Karp, MD

Assistant Professor of Psychiatry

Matthew D. Krasowski, MD, PhD

Assistant Professor of Pathology
Section Chief, Toxicology and
Therapeutic Drug Monitoring

Margie L. O'Leary, MSN, RN, MSCN

Clinical Research Nurse Director
Department of Urology, Division of Neuro-
Urology and Incontinence
University of Pittsburgh School of Medicine
Adjunct Faculty Member
University of Pittsburgh School of Nursing

Linda K. Reid-Kelly, RN, MSN, JD

Risk Specialist
UPMC Presbyterian Shadyside

Barbara M. Usher, PhD, APRN-BC, BC-PCM

Advanced Practice Nurse
UPMC Presbyterian
Department of Palliative Care
and Medical Ethics
UPMC Montefiore

John P. Williams, MD

Peter and Eva Safar Professor and Chair
Anesthesiology and Critical Care Medicine

Guest Faculty

Giancarlo Barolat, MD

Department of Neurosurgery
Skyridge Medical Center
Director, Barolat Institute
Denver, CO

Steven D. Passik, PhD

Assistant Professor of Psychology
and Psychiatry
Cornell University Medical College
New York, NY

All course faculty members reside in the metropolitan Pittsburgh, Pennsylvania area and have an appointment at the University Pittsburgh School of Medicine unless otherwise specified.

In accordance with Accreditation Council for Continuing Medical Education requirements on disclosure, information about relationships of presenters with commercial interests (if any) will be included in materials distributed at the time of the conference.

ACUTE PERIOPERATIVE PAIN TRACK

Saturday and Sunday, November 3 & 4, 2007

OBJECTIVES

At the conclusion of the Acute Perioperative Pain Track, participants should be able to:

- Discuss the perioperative pain management modality in several surgical indications.
- Interpret an ultrasound images at the level of the brachial plexus and its branches and the femoral and sciatic nerve.
- Identify the proper indications of the use of peripheral nerve blocks in patients undergoing joint replacement and surgery following trauma.
- Discuss billing for peripheral nerve blocks performed for perioperative analgesia.
- Discuss the processes involved in developing an acute perioperative pain service in private practice.

SCHEDULE ~ ACUTE PERIOPERATIVE PAIN TRACK

Saturday, November 3, 2007

| | |
|---------|--|
| 7:00 am | Registration/Breakfast |
| 8:00am | Welcome and Introduction <i>John P. Williams, MD</i> |
| 8:10 am | Genetics of Pain <i>Mitchell Max, MD</i> |
| 8:40 am | Preventing Chronic Post Surgical Pain Syndrome <i>Bruce Ben-David, MD</i> |
| 9:20 am | Regional Anesthesia for Upper Extremity Surgery <i>Steve Orebaugh, MD</i> |
| 9:40 am | Continuous Nerve Block Techniques for Major Surgery – Orthopaedic Indications <i>Rama Joshi, MD</i> |

- 10:00 am **MIS Knee and MIS HIP: The Surgeon's Point of View**
Dana Mears, MD, PhD
- 10:30 am **Break**
- 10:50 am **Continuous Nerve Block Techniques for Major Surgery – Paravertebral Blocks**
Rita Merman, MD
- 11:10 am **Billing for Peripheral Nerve Blocks and Follow-up Visits**
Jane B. Sarra
- 11:30 am **Patient and Nurse Education: Closing the Loop**
Denise Verosky, MS, MSN, CMSRN (presented for Lois Pizzi, BSN, RN-BC)
- Noon **Lunch**
- 1:00 pm **Use of Navigation for Joint Replacement: The Surgeon Point of View**
Lawrence Crossett, MD

Opioid Update

- 1:30 pm **PCA Safety**
Colleen J. Dunwoody, MS, RN-BC
- 2:00 pm **Opioid Peripheral Antagonists**
Jonathan Moss, MD, PhD
- 2:30 pm **Pain Management in the Battlefield**
Chester 'Trip' Buckenmaier III, MD, LTC, MC, USA
- 3:00 pm **PONV Update**
Jacques E. Chelly, MD, PhD, MBA
- 3:20 pm **Break**
- 3:40 pm **Compression Syndrome & PNBs**
Anesthesia Perspective: *Pat Forte, MD*
Surgical Perspective: *Hans Pape, MD*

- 4:10 pm **Round Table Discussion**
Establishing a Regional Anesthesia Service in Private Practice Settings
Brian Matusic, DO
- 4:30 pm **Update in Muscle Relaxant**
Mark Hudson, MD
- 5:00 pm **General Discussion**
- 5:30 pm **Saturday Adjournment**

ACUTE PERIOPERATIVE PAIN TRACK CONTINUED

Sunday, November 4, 2007

- 7:00 am **Registration and Continental Breakfast**
- 8:00 am **Round Table: Basic Ultrasound 101 Knobs, Machine, and Scatter**
Paul Bigeleisen, MD, Steve Orebaugh, MD, and Shawn Beaman, MD
- 9:30 am **Ultrasound and PNB Workshops**
Paul Bigeleisen, MD, Steve Orebaugh, MD, Shawn Beaman, MD, and Anna Uskova, MD
- 12:30 pm **Conference Adjournment**

Acute Perioperative Pain Track Faculty

Shawn Beaman, MD

Assistant Professor of Anesthesiology

Bruce Ben-David, MD

Clinical Associate Professor of Anesthesiology

Paul Bigeleisen, MD

Visiting Associate Professor of
Anesthesiology

Jacques E. Chelly, MD, PhD, MBA

Professor of Anesthesiology and
Orthopaedic Surgery
Director of the Division of Acute
Interventional Perioperative Pain
and Regional Anesthesia

Lawrence Crossett, MD

Assistant Professor of Orthopaedic Surgery

Colleen J. Dunwoody, MS, RN-BC

Advanced Practice Nurse – Pain Management
UPMC Presbyterian Shadyside

Mark Hudson, MD

Associate Professor of Anesthesiology &
Vice Chair of Clinical Operations

Rama Joshi, MD

Clinical Assistant Professor of Anesthesiology

Mitchell Max, MD

Visiting Professor
Director of the Molecular Epidemiology and
Pain Program
Department of Anesthesiology

Rita Merman, MD

Clinical Assistant Professor of Anesthesiology
Director of the Molecular Epidemiology and
Pain Program

Steve Orebaugh, MD

Assistant Professor of Anesthesiology

Hans-Christoph Pape, MD

Associate Professor of Orthopaedic Surgery

Denise Verosky, MS MSN, CMSRN

Director Nursing Education
and Research
UPMC Shadyside

Pat Forte, MD

Assistant Professor of Anesthesiology

Jane B. Sarra

Executive Administrator
Department of Anesthesiology
University of Pittsburgh Medical Center

Anna Uskova, MD

Clinical Assistant Professor
of Anesthesiology

Denise Verosky, MS, MSN, CMSRN

Director Nursing Education and Research
UPMC Shadyside

John P. Williams, MD

Peter and Eva Safar Professor and Chair
Anesthesiology and Critical Care Medicine

Guest Faculty

Chester 'Trip' Buckenmaier III, MD LTC, MC, USA

Walter Reed Army Medical Center
Washington, DC

Brian Matusic, DO

Anesthesiology staff
Weirton Medical Center
Weirton, WV

Dana Mears, MD

Orthopedic Surgeon
GPOA
Pittsburgh, PA

Jonathan Moss, MD, PhD

Professor and Vice Chairman for Research
Department of Anesthesia and Critical Care
Professor of the College;
Chair, Institutional Review Board
University of Chicago
Chicago, IL

*All course faculty members reside in the metropolitan
Pittsburgh, Pennsylvania area and have an appointment at
the University Pittsburgh School of Medicine unless
otherwise specified.*

*In accordance with Accreditation Council for Continuing
Medical Education requirements on disclosure, information
about relationships of presenters with commercial interests
(if any) will be included in materials distributed at the time of
the conference.*

SPECIAL NEEDS



Participation by all individuals is encouraged. Advance notification of any special needs will help us provide better service. Please notify us of your needs **at least two weeks** in advance of the program by calling (412) 647-8257 or (412) 647-8232.

FOR MORE INFORMATION

Conference Contact:

Tricina Cash

UPMC/CCEHS

Medical Arts Building, Suite 220

200 Lothrop Street • Pittsburgh PA 15213

Email: CCEHS@upmc.edu

Phone: (412) 647-8755 or 412-647-8232 • Fax: (412) 647-8222

DIRECTIONS TO NEMACOLIN WOODLANDS

Pittsburgh (South)

- Rt. 51 South to Rt. 40 East (Uniontown)
- Turn right onto Rt. 40 East (also posted as Rt. 119 South)
- Continue Rt. 40 East approx. 16 miles to Farmington
- Nemacolin is located on the left side of Rt. 40 East

Pittsburgh (Airport, West and North)

- Rt. 60 South to I-79 South
- I-79 South to I-70 East (Washington, PA)
- I-70 East to Rt. 43 South (California Exit)
- Rt. 43 South to Rt. 40 East (Brownsville)
- Continue Rt. 40 East approx. 32 miles to Farmington
- Nemacolin is located on the left side of Rt. 40 East

Transportation

Ground transportation is available from Pittsburgh International Airport. For information and reservations call **800-422-2736**.

